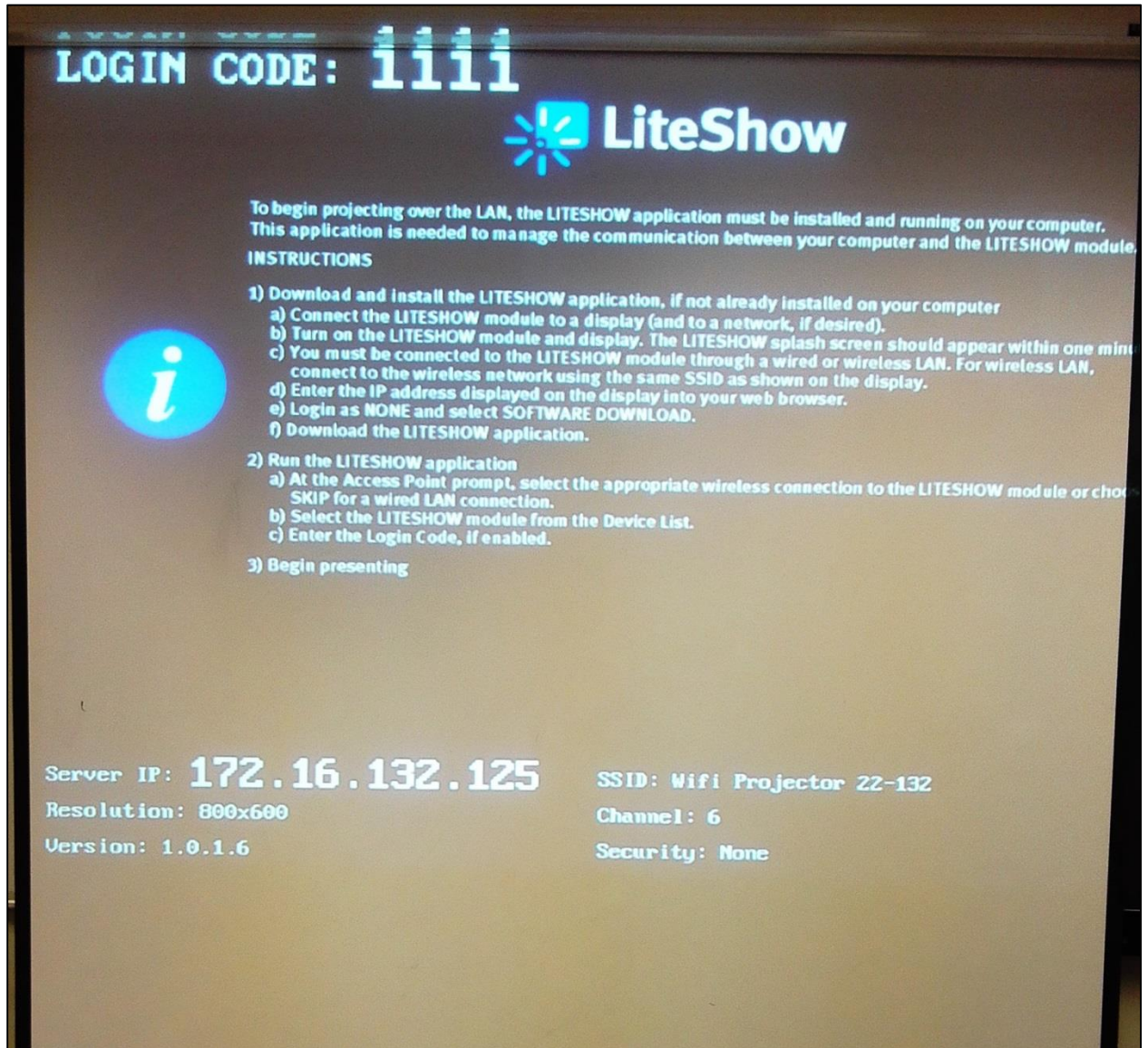


# LiteShow3 Manual

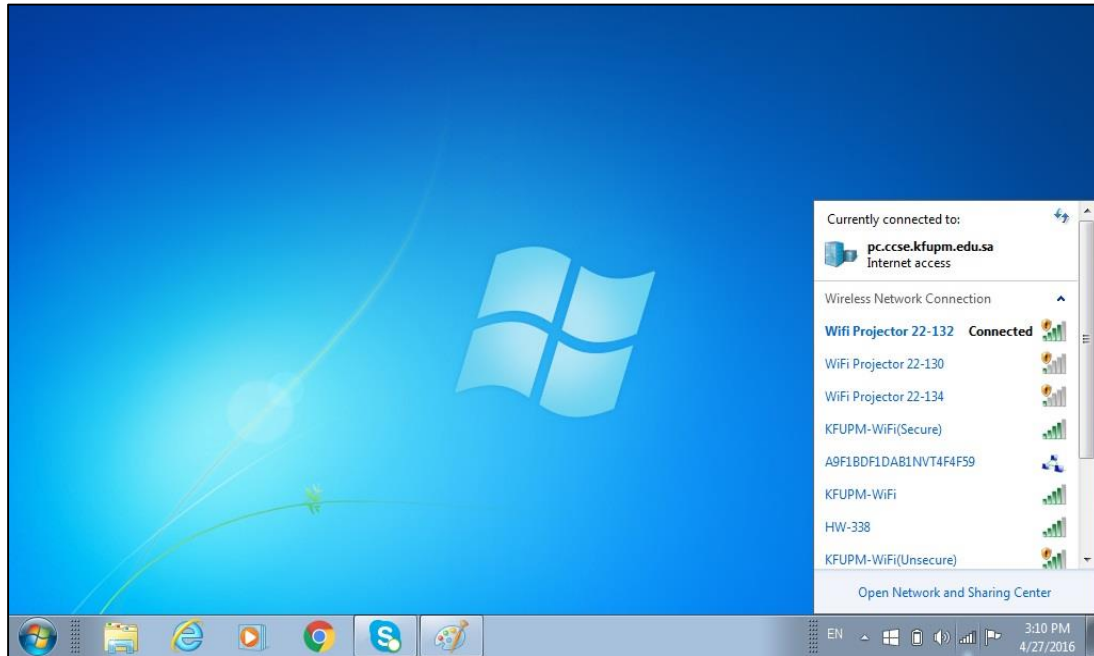
## Step 1: Welcome Screen

- Welcome Screen of LiteShow3 Adapter on Projector



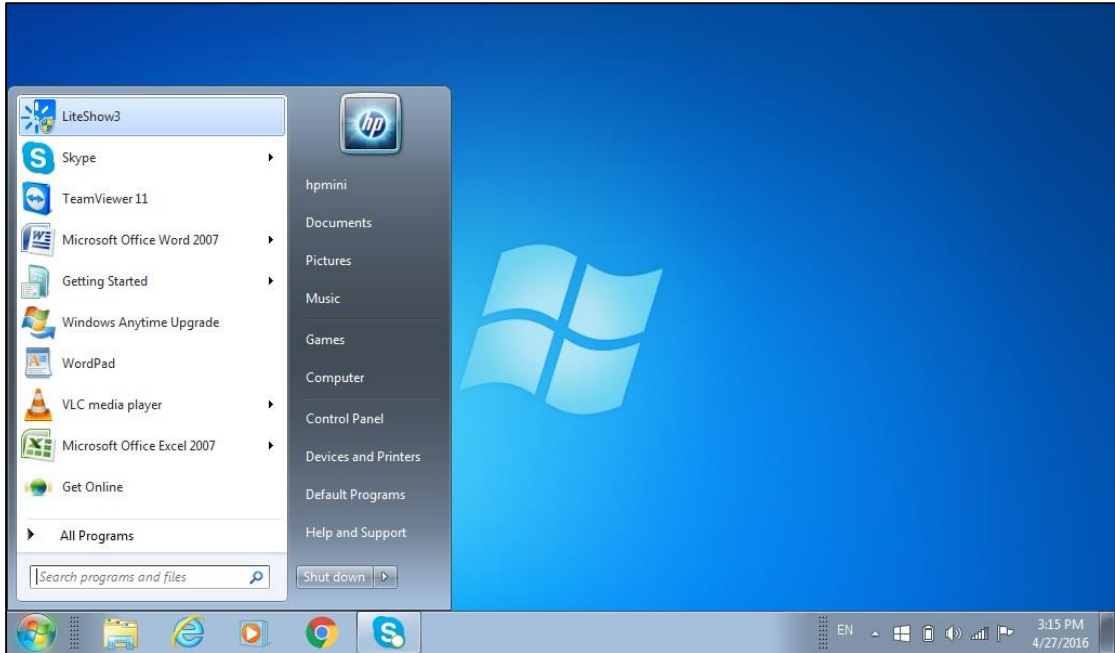
## **Step 2: Connect to Wifi**

- Connect Wi-Fi of the Laptop according to Room number .i.e. Wi-Fi Projector 22-132



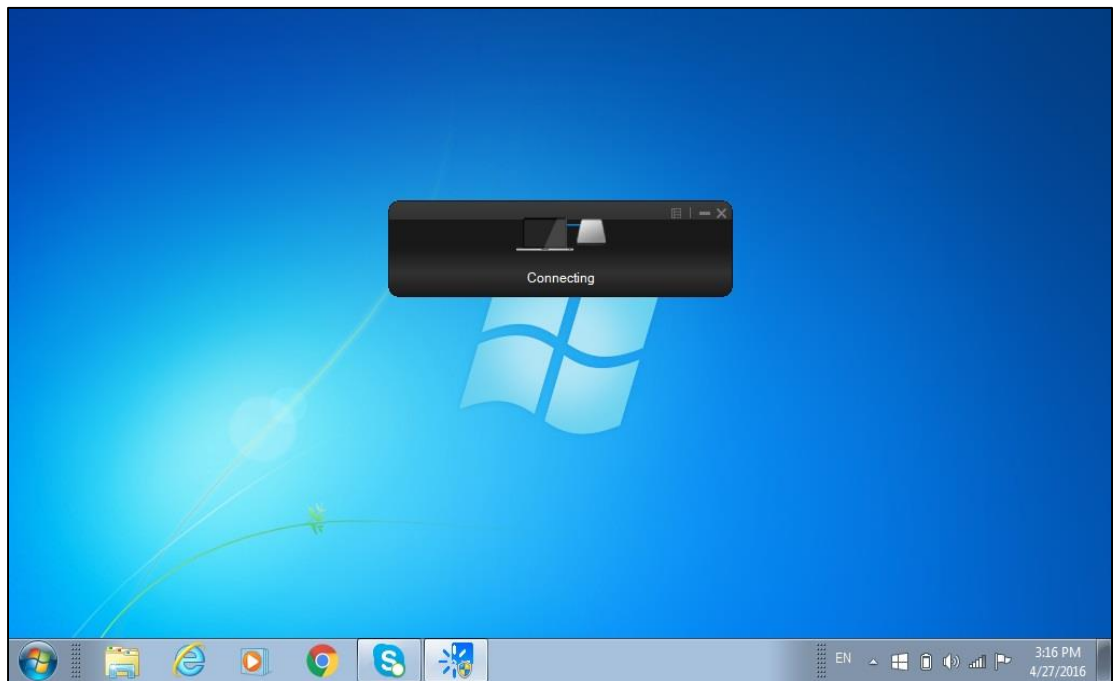
## **Step 3: Download, Install and Run LiteShow3 application**

- Liteshow3 client software needs to be installed and it can be found at ccse-software or on infocus website as follows:
  - <\\ccse-software.pc.ccse.kfupm.edu.sa\Applications\Drivers\Projector\Liteshow>
  - <http://www.infocus.com/peripherals/INLITESHOW3#downloads>
- Once connected to Wi-Fi, run Liteshow3 software.



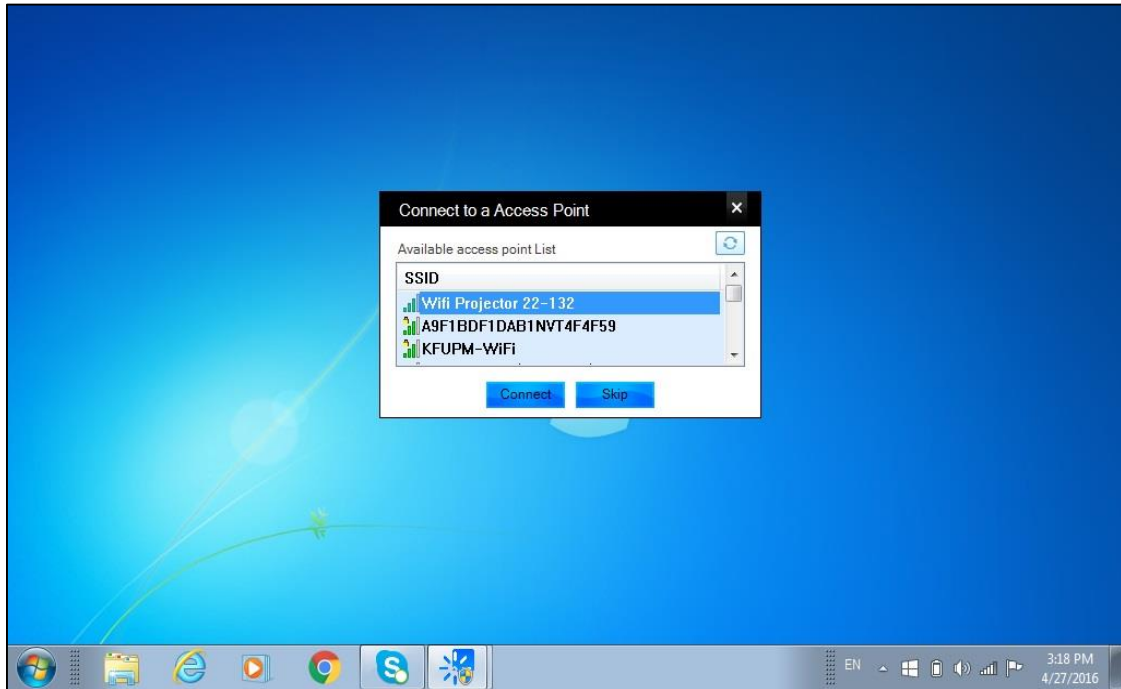
#### **Step 4**

- Connecting to Liteshow3.



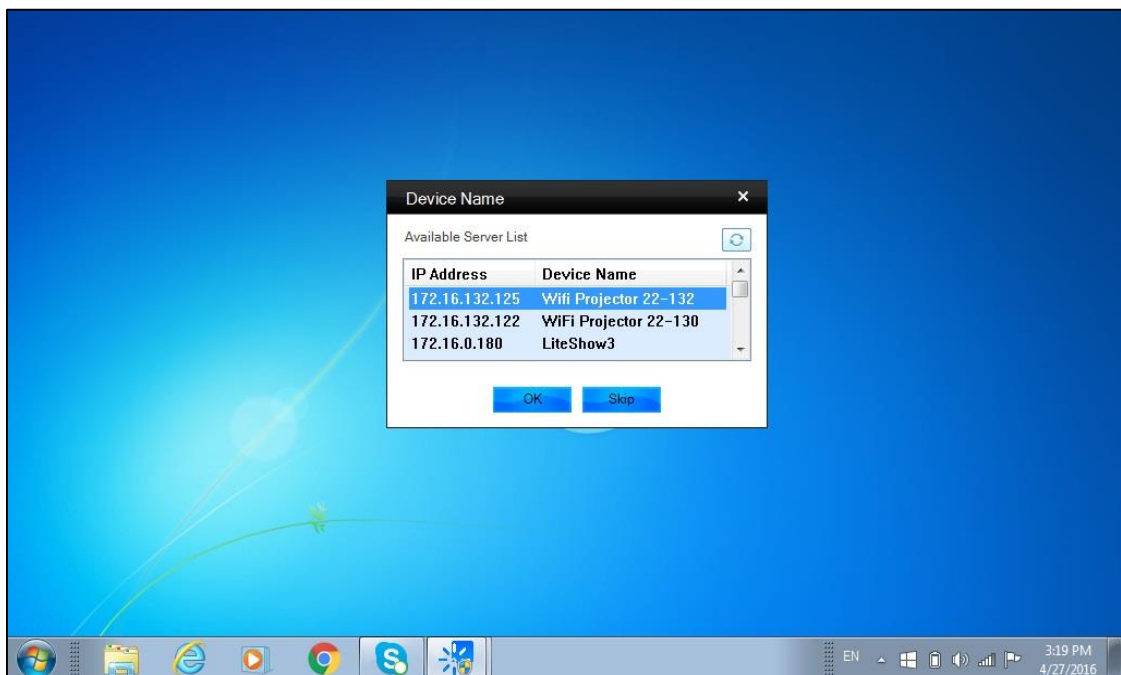
### Step 5: Connect to Access Point

- Connect to the access point by selecting the “SSID” corresponding to the Room number.



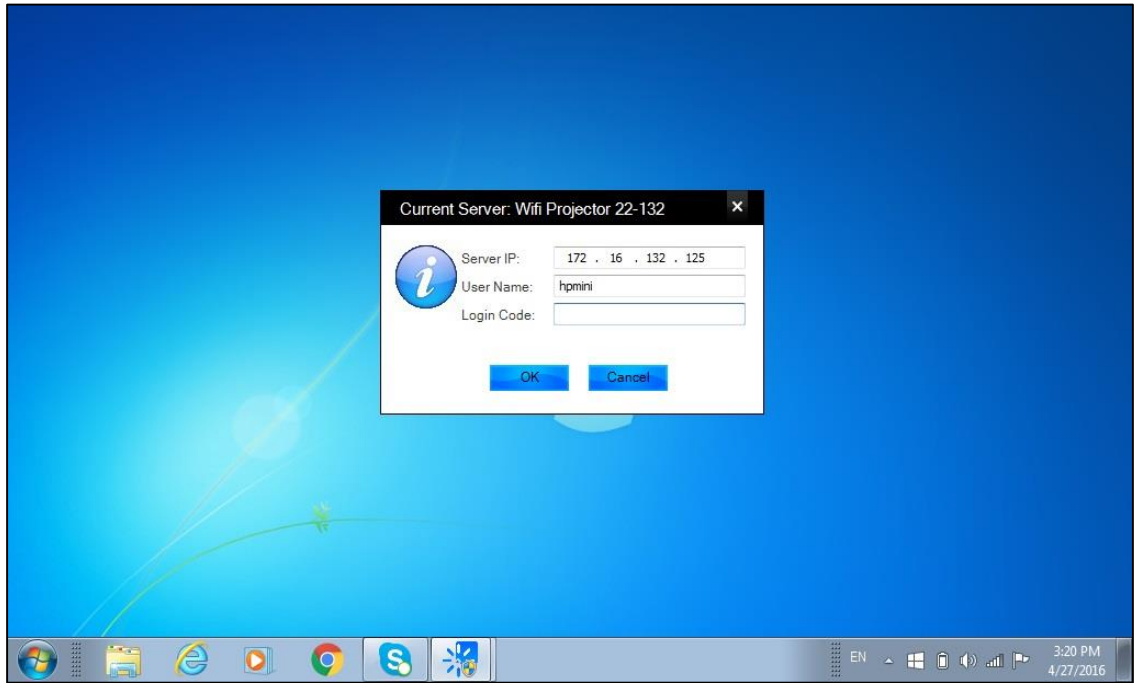
### Step 6: Select the Device

- It will show the Device name along with IP Address. Select the device with the IP address/device name with that on the welcome screen.



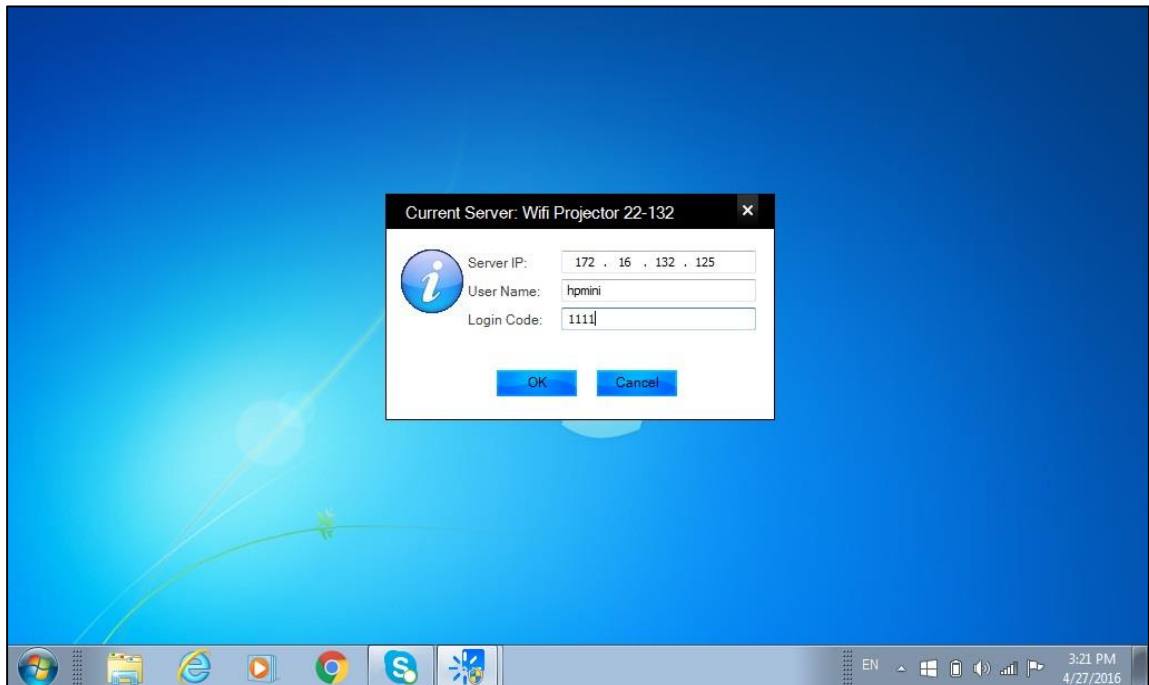
### Step 7: Insert login code

- Put login code. Default is "1111". Also available on login screen.



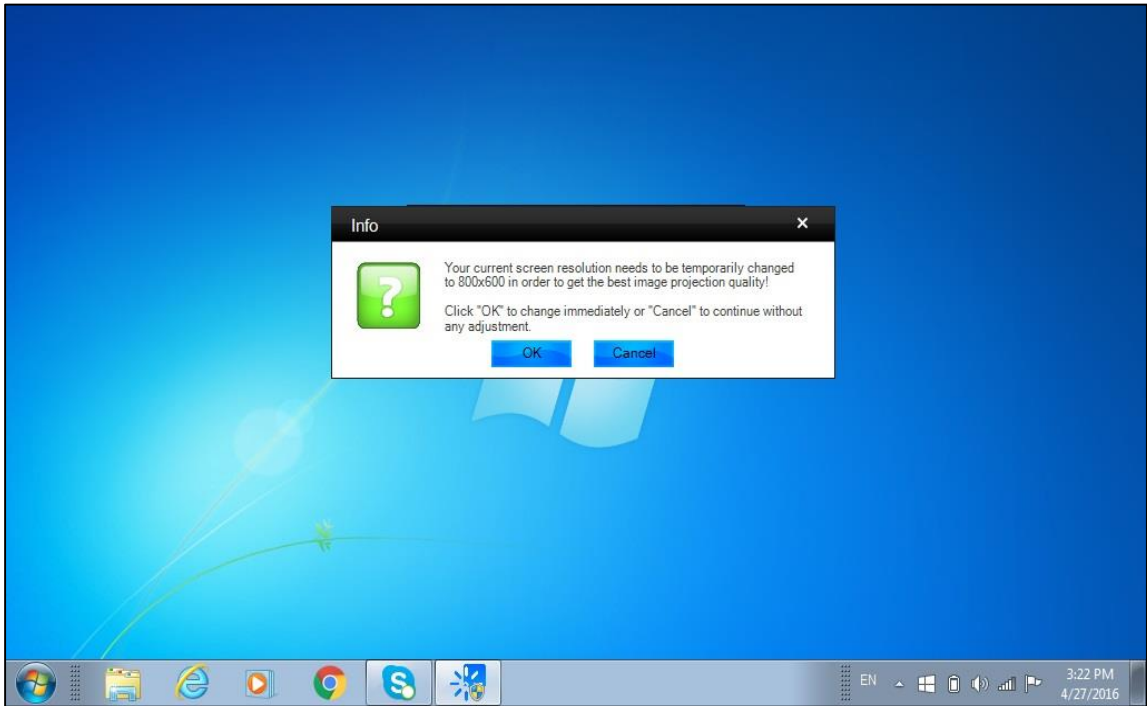
### Step 8

- Login code inserted.



### Step 9: Screen Resolution

- For some laptops it will ask to adjust resolution of screen. Press OK.



### Step 10

- Screen after successful connection.

