

GUIDELINES ON USING THE 'latex' FOLDER

1. Please copy the contents of the 'latex' folder into a known location on your PC.
2. Open the full.tex file and follow the instructions and edit each file mentioned accordingly.
3. Carefully read the instructions before you start editing the file with the contents.
4. Save the file.
5. Execute the LaTeX file using the any LaTeX editor. (It is highly recommended to use the WinEdt[®] editor)
6. It is highly recommended to convert all the image/plots/graphics files used in your Thesis in .eps format. You may use Matlab to generate image files in .eps format. Otherwise you can use image conversion software to convert images of other formats into .eps format. Any PostScript printer can be used, e.g the free [Generic PostScript Printer](#) from Adobe.
7. It is very important to have the *kfupm_thesis.cls* class file present in the root folder.
8. The references/bibliography is included in the *library.bib* file which is a bibtex file containing all the citations of the references/bibliography. The bibtex citations can be downloaded with most of the published papers from the publishing website, or, alternatively may be generated by using other software such as Mendeley.
9. Remember to always keep all the Thesis related files i.e., image files, class files, .bib file etc. in the same folder.

INSTALLATION OF MIKTEX DISRIBUTION

1. The Miktex can be downloaded online from the following link:

<http://miktex.org/2.9/setup>

2. It is recommended to download only the 'basic Miktex system'.
3. While selecting the server to download, it is recommended to select the following server:

ctan.math.utah.edu (US)

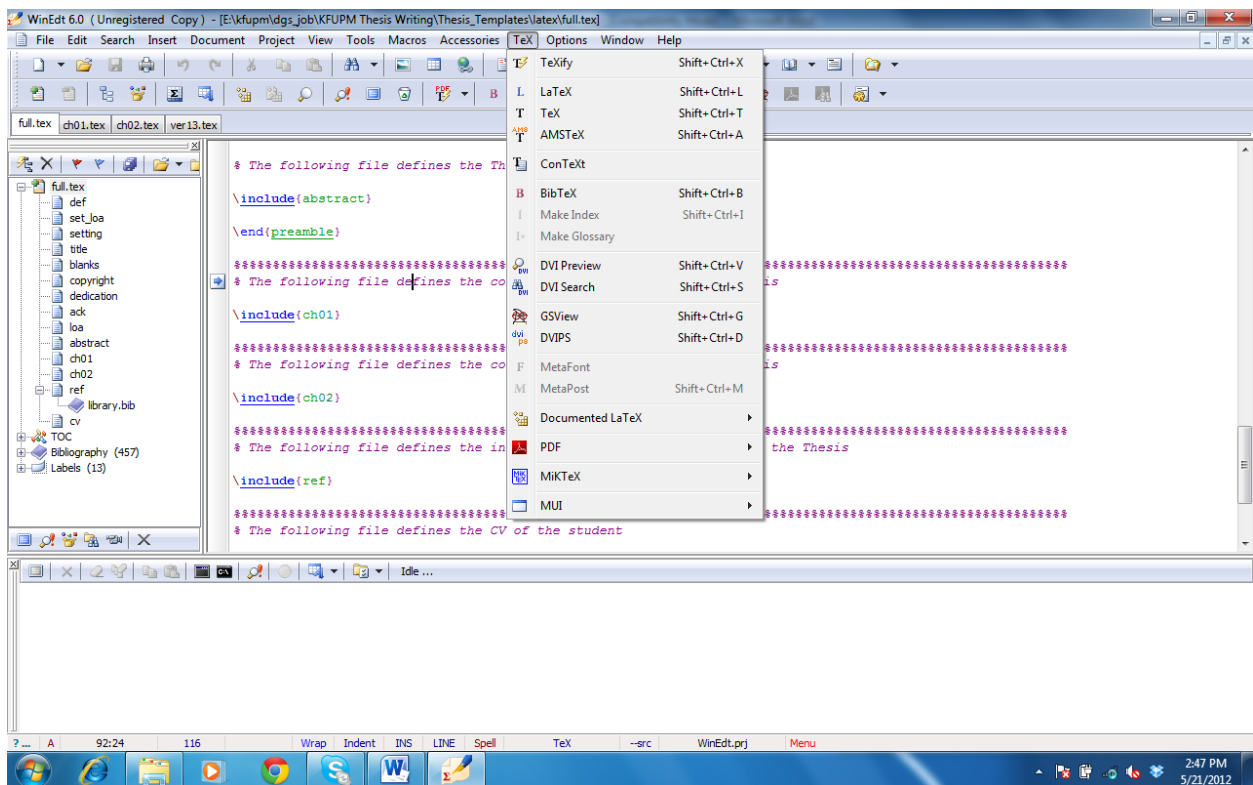
4. After download, Miktex should be installed first followed by installation of editor, such as WinEdt, Latex Editor, etc.
5. It is recommended to use WinEdt editor with the provided templates but the user can use any other editor. A comparison of the most commonly available Latex editors can be found at the following link:

http://en.wikipedia.org/wiki/Comparison_of_TeX_editors

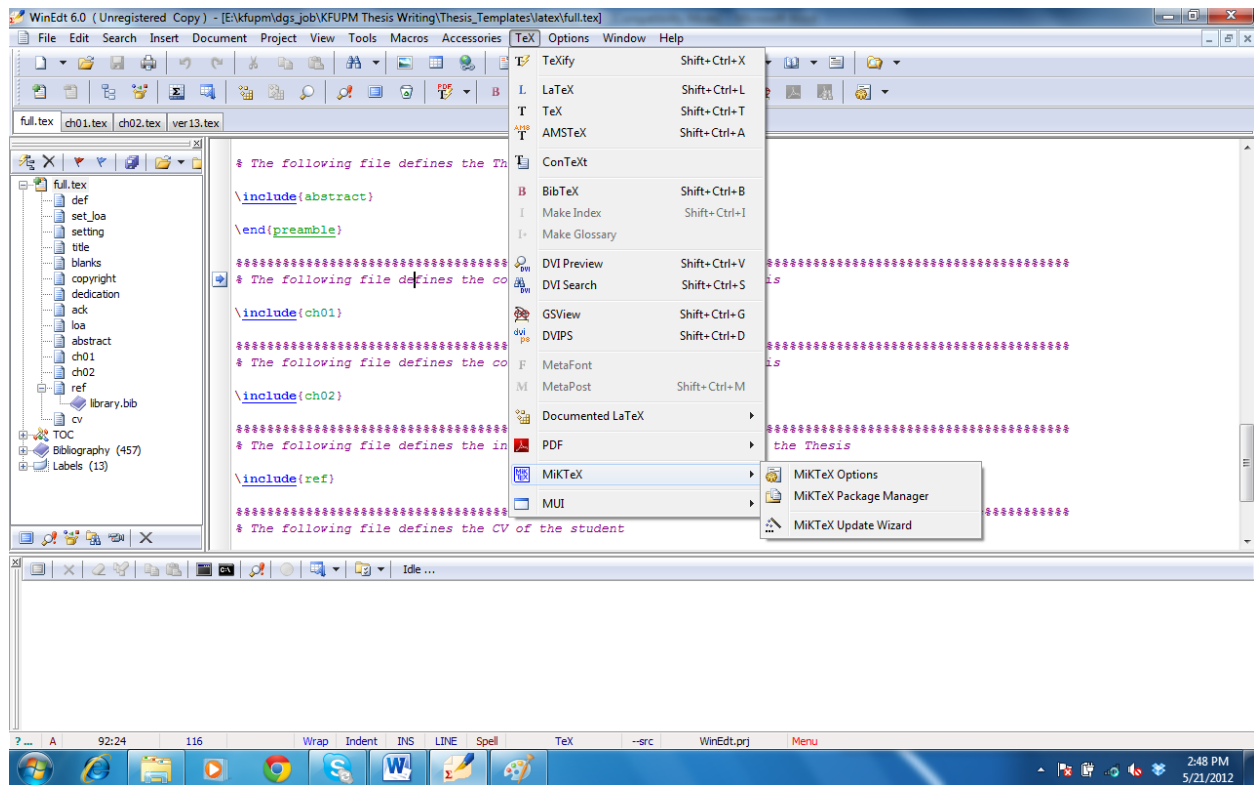
How to enable the Miktex package repository download feature in WinEdt:

In the following a 7 seven steps guide is presented to enable the update/download of Miktex packages on the fly through the internet. These packages contain several types of auxiliary files which are need for the Latex engine to compile the latex files. These packages are also updated after some time so it is recommended to always download them whenever it is prompted.

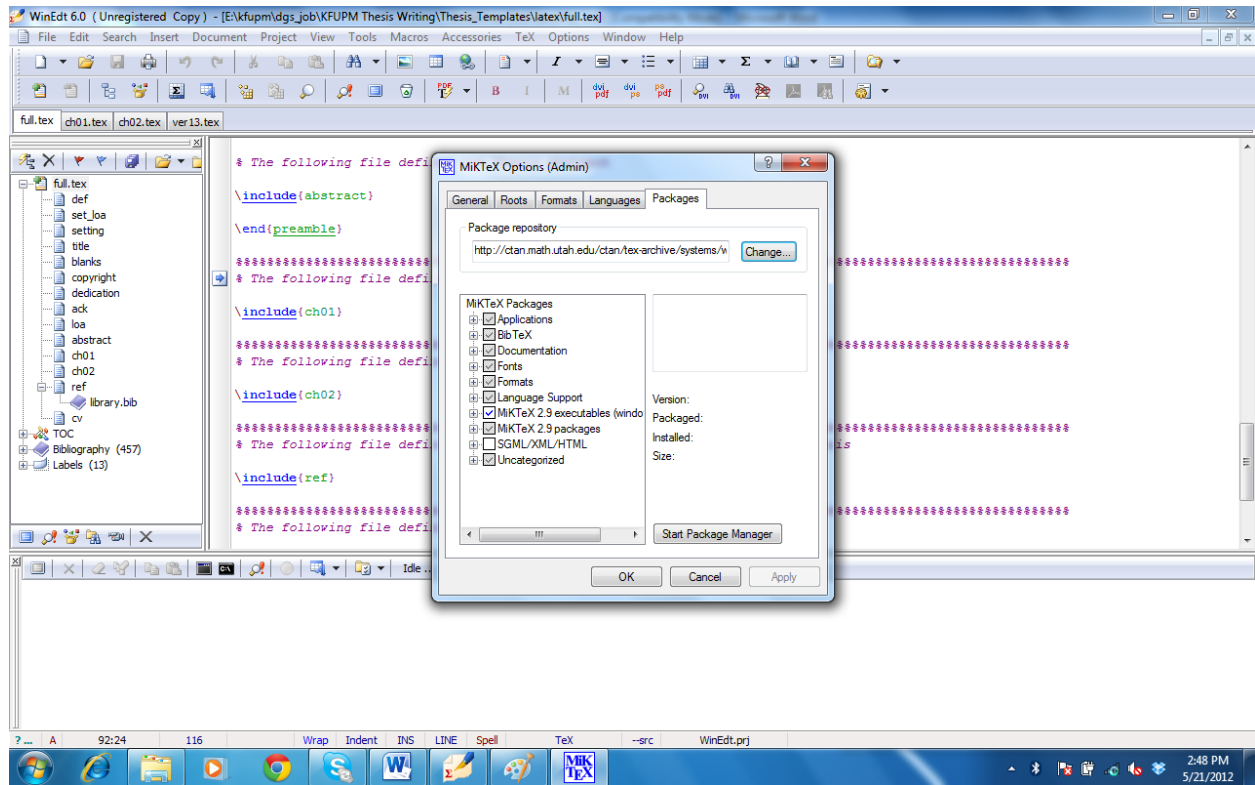
1. Make sure that you open the WinEdt and 'run as administrator'. Then go to 'Tex' tab in WinEdt, as shown in the Figure below:



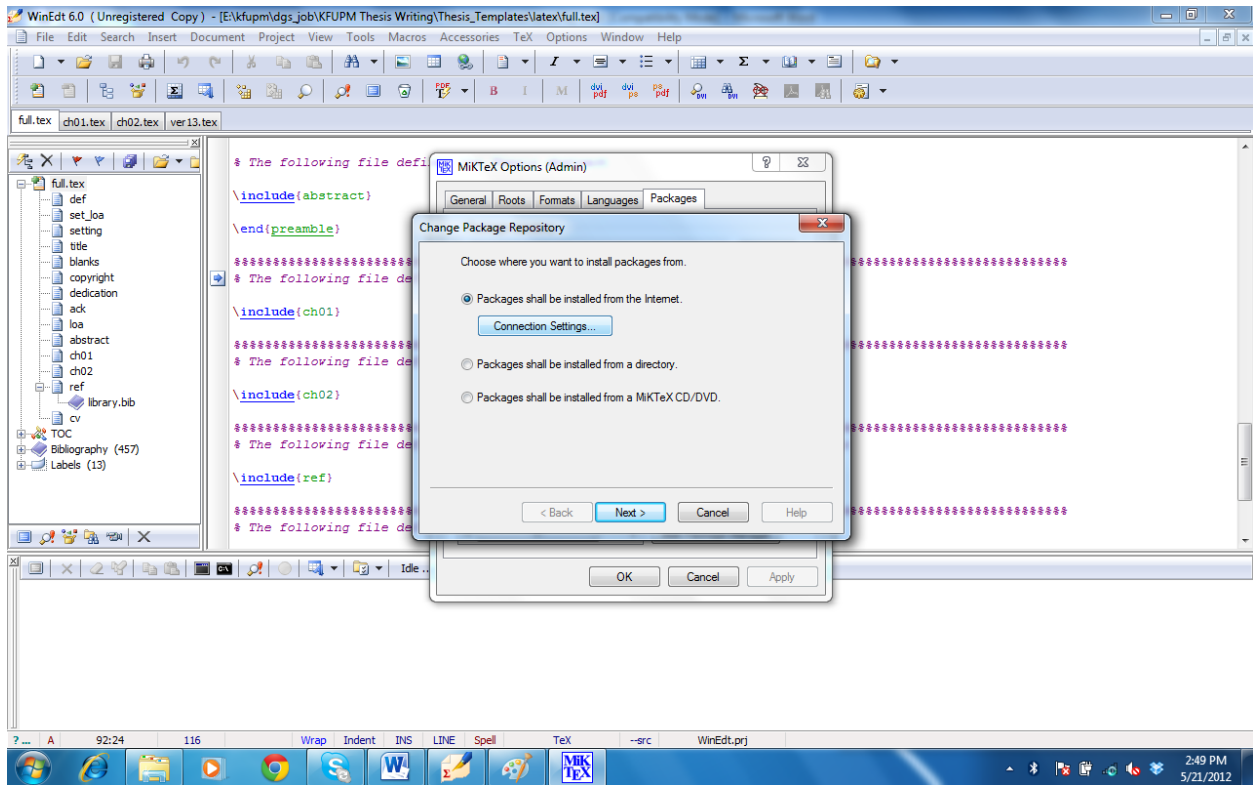
2. Go to the 'Miktex' in the drop down menu, as shown in the Figure below:



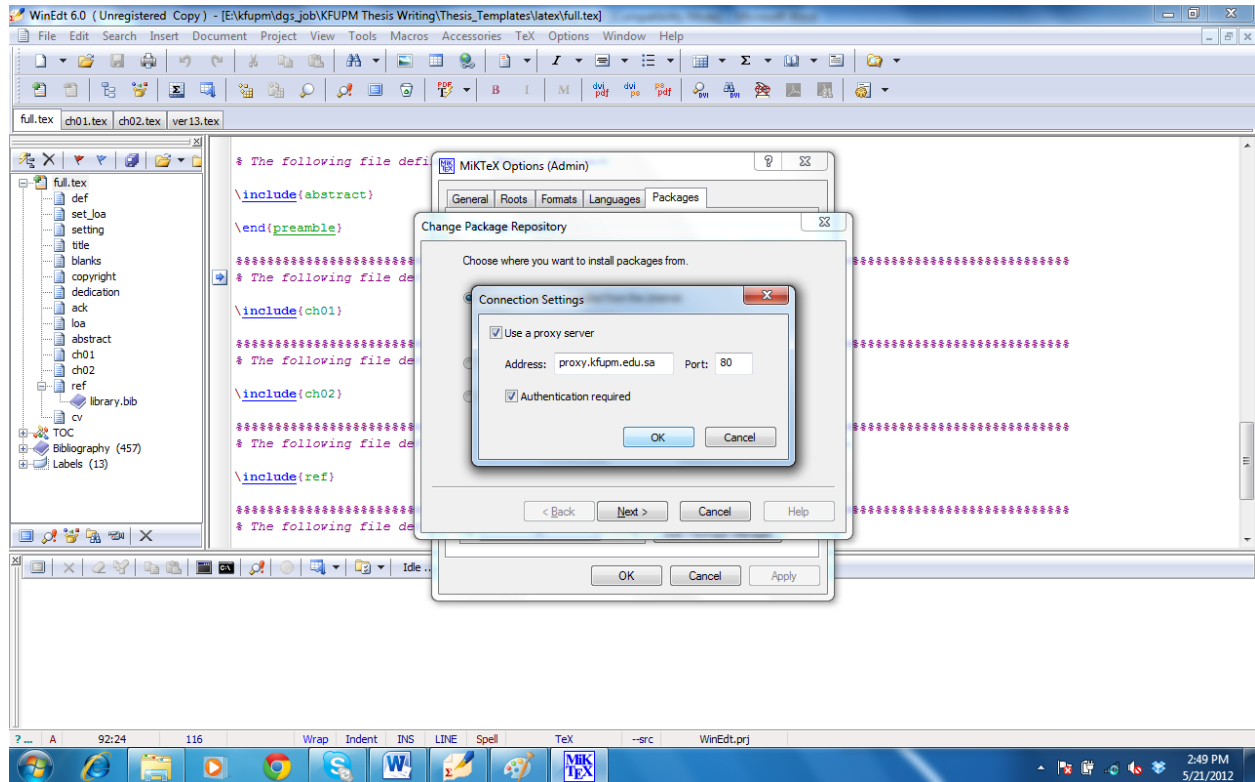
3. Click on the 'Packages' tab and then on 'change', as shown in the Figure below:



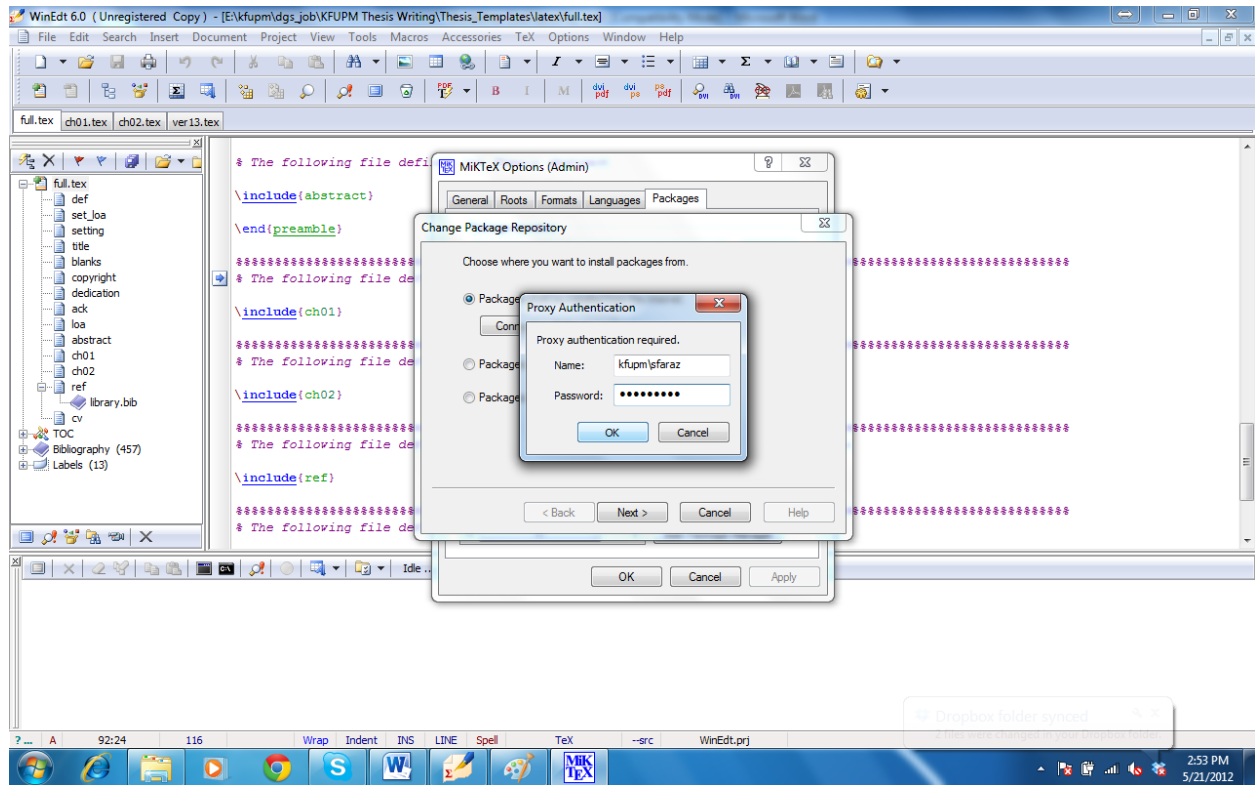
4. Select the first option and click on 'Connection Settings' button, as shown in the Figure below:



5. You will be prompted to enter your internet connection settings. For users in the KFUPM, you need to enter the proxy and port information. Remember to check the 'Authentication required' option, as shown in the Figure below:



6. Enter your ITC username and password, as shown in the Figure below:



7. Once connected to the internet, you will be able to see a list of 'http' and 'ftp' servers from where the MikTeX can download the packages. It is recommended to use the HTTP server located at CTAN, Utah.

<http://ctan.math.utah.edu/ctan/tex-archive/systems/win32/miktex/tm/packages/>

